

1 | 2 | 3 | 4 | 5 | 6 | 7 | 10 | 11 | 12 | 13 | 14 | 15 | 16

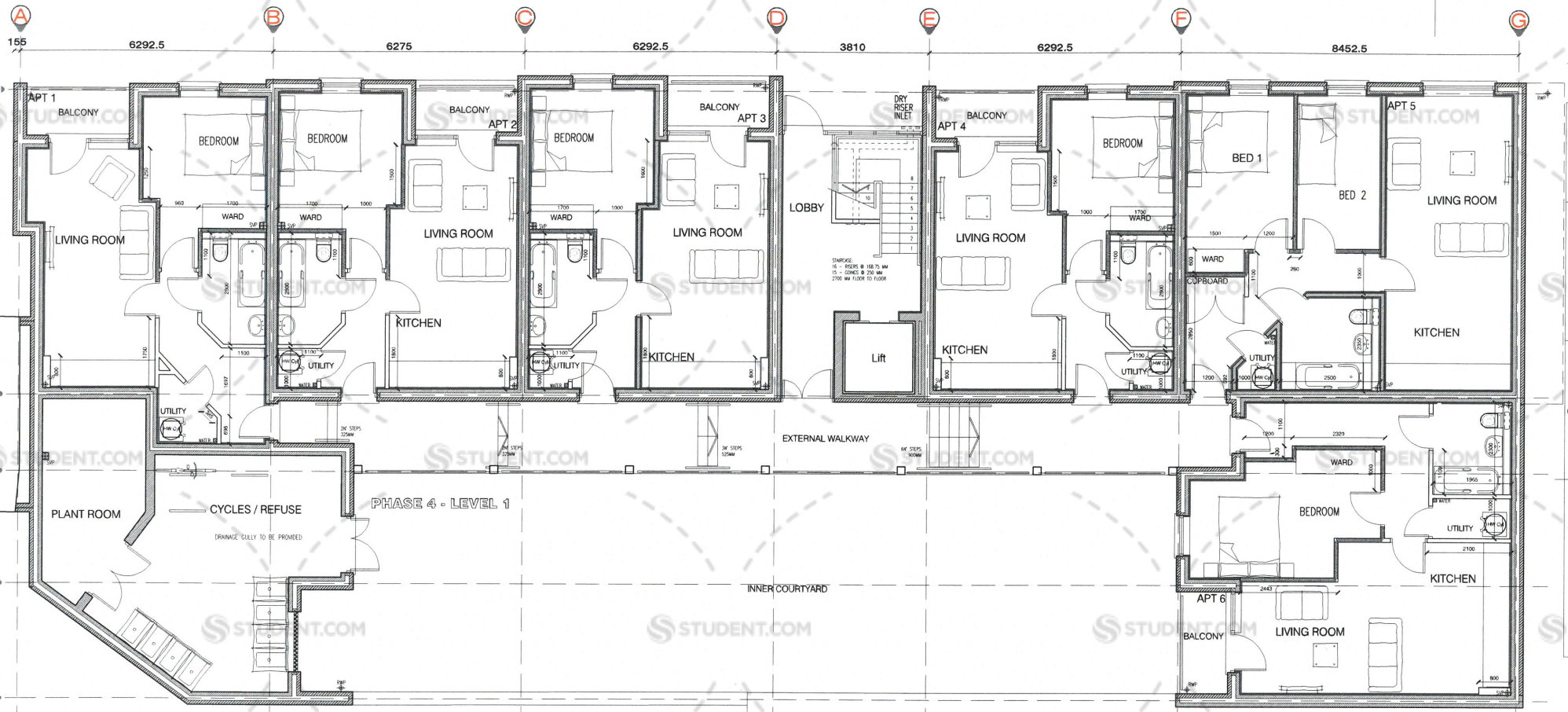
STUDENT.COM

STUDENT.COM

STUDENT.COM

STUDENT.COM

RESIDUAL RISK
 Wherever possible, unnecessary risk is designed out of these proposals. Where residual risk remains it is assessed and identified on the relevant drawings with this symbol. Refer to the note and the relevant measures in the Health & Safety documentation.



- B APARTMENT LAYOUTS UPDATED, SETTING OUT DIMENSIONS ADDED 27/04/2011
- A DRY RISER INLET/OUTLETS LOCATION REVISED, EXTERNAL STAIRS REVISED, LINING ADDED TO BLOCKWORK WALL, KITCHEN LAYOUTS SIMPLIFIED, FLAT CONFIGURATION AT GRIDS F - G REVISED. 21/04/2011

AXIS
 architecture
 Talbot Chambers, 2-6 North Church Street, Sheffield, S1 2DH
 Tel: +44(0)114 2966454 Fax: +44(0)114 2966456 www.axis-architecture.com

PHASE 4
 MELCOR HOUSE
SOILY STREET
 TURNKEY SOLUTIONS

GA PLAN
 LEVEL 1

A1 Scale:	A3 Scale:	Date:	Drawn By:
1:50	1:100	APRIL 2011	A X I S
Checked/Revised:	Revision:		
26475 A(01)01	B		

© COPYRIGHT EXEMPT ON ALL DESIGN AND INFORMATION CONTAINED HEREIN FOR CONSTRUCTION AND NOT SCALE FOR CONSTRUCTION AND NOT SCALE FOR CONSTRUCTION AND NOT SCALE FOR CONSTRUCTION